

KNAPHEIDE
SINCE 1848



**STEEL
PLATFORM BODIES**

KNAPHEIDE STEEL PLATFORM BODIES



PLATFORM UNDERSTRUCTURE

All platform bodies are constructed with structural long sill and cross sill understructure.

*Not shown - All bodies are undercoated to provide an extra layer of protection.

STEEL PLATFORM BODIES

Knapheide has been designing and manufacturing platform bodies since the introduction of the Model T. Today, Knapheide continues to produce the highest quality platforms available.

With selections tailored to various duty cycles, there is a Knapheide Platform Body for any application.

POPULAR VOCATIONS



CONSTRUCTION



AGRICULTURE



LANDSCAPING/
TREE CARE



OIL/MINING/GAS

VALUE-MASTER-X™ PLATFORM BODIES



PVMXT-95
*Body may be shown with optional features

Knapheide's most popular platform, the Value-Master-X™ (PVMX), is a value-priced standard duty platform with distinctive tail skirt styling. It has been engineered to work in both hoist and non-hoist applications.

PVMX models are available in 7'-26' lengths and for all size chassis. Chassis-specific models are available for Ford Transit, Ram ProMaster and Mercedes-Benz Sprinter chassis cabs.

A. MULTIPLE FLOORING OPTIONS:

- Wood: 2" nominal treated #1 grade dense yellow pine with tongue and groove construction
- Smooth steel: 10-gauge, high strength (50,000 psi yield strength)
- Tread plate: 1/8" thick

B. SIDE AND END RAILS

constructed of formed 12-gauge high strength steel (50,000 psi)

C. REINFORCED INTERNAL STAKE POCKETS

are sized to accept 2x4 lumber as well as a wide array of Knapheide side options

D. CLEARANCE AND MARKER LIGHTS

are LED and meet FMVSS 108 requirements

E. DURABLE, OVEN-CURED HIGH GLOSS BLACK FINISH TOP COAT

FEATURES NOT SHOWN

STRUCTURAL LONG SILLS WITH GUSSETED CROSS MEMBERS:

- 5" on 12' and shorter platforms
- 7" on 13' and longer platforms
- 6" for SRW (80 Series) platforms

ELECTRODEPOSITION PRIME-PAINT SYSTEM
provides superior corrosion resistance

FORMED, 11-GAUGE HIGH STRENGTH (50,000 PSI) CROSS MEMBER

are spaced on 18" centers for 12' and shorter platforms and 12" centers on 13' and longer platforms

WATER-BASED UNDERCOATING
on underside of platform

HEAVY-HAULER JUNIOR™ PLATFORM BODIES



PHHJT-95
*Body may be shown with optional features

The Heavy-Hauler Junior™ (PHHJ) is a durable, standard duty platform with distinctive tail skirt styling and rub rails. It has been engineered to work in both hoist and non-hoist applications.

PHHJ models are available in 9'-26' lengths and are compatible with dual rear wheel chassis.

A. MULTIPLE FLOORING OPTIONS:

- Wood: 2" nominal treated #1 grade dense yellow pine with tongue and groove construction
- Smooth steel: 10-gauge, high strength (50,000 psi yield strength)
- Tread plate: 1/8" thick

B. SIDE AND END RAILS

constructed of formed 12-gauge high strength steel (50,000 psi)

C. REINFORCED EXTERNAL STAKE POCKETS

are sized to accept 2x4 lumber as well as a wide array of Knapheide side options

D. CLEARANCE AND MARKER LIGHTS

are LED and meet FMVSS 108 requirements

E. DURABLE, OVEN-CURED HIGH GLOSS BLACK FINISH TOP COAT

F. EXTERNAL RUB RAIL

constructed of 3/8" steel located on both sides and across the rear of the platform

FEATURES NOT SHOWN

STRUCTURAL LONG SILLS WITH GUSSETED CROSS MEMBERS:

- 5" on 12' and shorter platforms
- 7" on 14' and longer platforms

ELECTRODEPOSITION PRIME-PAINT SYSTEM
provides superior corrosion resistance

FORMED, 11-GAUGE HIGH STRENGTH (50,000 PSI) CROSS MEMBERS

are spaced on 18" centers for 12' and shorter platforms and 12" centers on 14' and longer platforms

WATER-BASED UNDERCOATING
on underside of platform

CARGO-HAULER™ PLATFORM BODIES



PCHT-125
*Body may be shown with optional features

Knapheide's Cargo-Hauler™ (PCH) platform has a robust understructure to withstand tough job site applications. The PCH is a heavy duty platform with distinctive tail skirt styling. It has been engineered to work in both hoist and non-hoist applications.

PCH models are available in 12'-26' lengths and are compatible with dual rear wheel chassis.

A. MULTIPLE FLOORING OPTIONS:

- Wood: 2" nominal treated #1 grade dense yellow pine with tongue and groove construction
- Smooth steel: 7-gauge mild steel (36,000 psi yield strength)
- Tread plate: 3/16" thick

B. SIDE AND END RAILS

constructed of structural C-channel steel

C. REINFORCED INTERNAL STAKE POCKETS

are sized to accept 2x4 lumber as well as a wide array of Knapheide side options

D. CLEARANCE AND MARKER LIGHTS

are LED and meet FMVSS 108 requirements

E. DURABLE, OVEN-CURED HIGH GLOSS BLACK FINISH TOP COAT

FEATURES NOT SHOWN

STRUCTURAL LONG SILLS WITH GUSSETED CROSS MEMBERS:

- 5" on 12' and shorter platforms
- 7" on 14' and longer platforms

ELECTRODEPOSITION PRIME-PAINT SYSTEM

provides superior corrosion resistance

STRUCTURAL CHANNEL CROSS MEMBERS

are spaced on 12" centers

WATER-BASED UNDERCOATING

on underside of platform

HEAVY-HAULER™ PLATFORM BODIES



PHHT-124B
*Body may be shown with optional features

The Heavy-Hauler™ (PHH) is Knapheide's most rugged platform, designed to handle the most severe of hauling applications. It has been engineered to work in both hoist and non-hoist applications.

PHH models are available in 12'-26' lengths and are compatible with dual rear wheel chassis.

A. MULTIPLE FLOORING OPTIONS:

- Wood: 2" nominal treated #1 grade dense yellow pine with tongue and groove construction
- Smooth steel: 7-gauge mild steel (36,000 psi yield strength)
- Tread plate: 3/16" thick

B. SIDE AND END RAILS

constructed of structural C-channel steel

C. HEAVY DUTY, REINFORCED EXTERNAL STAKE POCKETS

are sized to accept 2x4 lumber as well as a wide array of Knapheide side options

D. CLEARANCE AND MARKER LIGHTS

are LED and meet FMVSS 108 requirements

E. DURABLE, OVEN-CURED HIGH GLOSS BLACK FINISH TOP COAT

F. EXTERNAL RUB RAIL

constructed of 3/8" steel located on both sides and across the rear (rear is optional) of the platform

FEATURES NOT SHOWN

STRUCTURAL LONG SILLS WITH GUSSETED CROSS MEMBERS:

- 5" on 12' and shorter platforms
- 7" on 14' and longer platforms

ELECTRODEPOSITION PRIME-PAINT SYSTEM

provides superior corrosion resistance

STRUCTURAL CHANNEL CROSS MEMBERS

are spaced on 12" centers

WATER-BASED UNDERCOATING

on underside of platform

POPULAR OPTIONS



STEEL TOOLBOXES

- Automotive quality 3-point T-handle latches
- Continuous stainless steel hinges are pry-proof and corrosion-resistant
- Extra heavy duty door chains installed
- Continuous door seals protect against water, dirt and dust
- Automotive grade, high gloss top coat
- Above body toolboxes available in white or black. Underbody toolboxes available in black.



APITONG WOOD FLOOR



POLY BOARD FLOOR



INTEGRATED D-RING TIE DOWNS



ROPE HOOK



UNDERBODY TIE-DOWN RAILS



UNDERBODY SLIDING TIE-DOWN CHANNEL



UNDERBODY STORAGE COMPARTMENT
Available in 8' and 10' lengths



RECEIVER HITCH



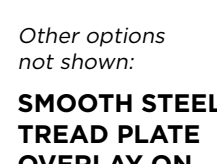
KNAP-PACK
Also available in straight and tapered sides



ICC BUMPER



SPARE TIRE RETAINER



Other options not shown:
SMOOTH STEEL/TREAD PLATE OVERLAY ON WOOD FLOOR
Available in 7-gauge or 10-gauge smooth steel, or 1/8" or 3/16" tread plate



SIDE OPTIONS

The addition of any of Knapheide's extensive platform side options can transform your platform into a multi-functional body for many uses.



STAKE RACKS

Stake racks are compatible with all Knapheide platforms. Choose between interlocking clip or quiet latch stake racks. Steel racks are completely immersed in Knapheide's electrodeposition prime-paint system.

Stake racks are available in steel or aluminum, 28" or 40" high sides.

Available in prime or black paint.



REFUSE SIDES PUNCHED

Punched refuse sides are compatible with the PVMX and PCH series platforms and the BH4094 bulkhead. Rear doors are equipped with a latch and bail system, pivot up to 270 degrees and can be secured in the open or closed position.

Punched refused sides are available in 40" height.

Available in black paint only.



REFUSE SIDES SOLID

Solid refuse sides are compatible with all the PVMX and PCH series platforms. Racks are completely immersed in Knapheide's electrodeposition prime-paint system for superior corrosion resistance. Solid refuse sides can be used for a wide variety of applications.

Solid refuse sides are available in 40" height.

Available in black paint only.



CONTRACTOR E-Z LOADER DROP SIDE PACKAGE

Drop side contractor packages are compatible with PVMX and PCH series platforms. Each side drops down to a full 180 degrees for easy access. Sides feature 45-degree sloped rub rails. Double acting tailgate may be dropped 90 or 180 degrees. Spreader chains position tailgate for material spreading depth.

E-Z loader drop sides are available in 8', 9', 10', 11' and 12' lengths.

Available in prime only.



CONTRACTOR FIXED SIDE PACKAGE

Fixed side contractor packages are compatible with PVMX and PCH series platforms up to 16' in length. A stake pocket model bulkhead and 14" high sides are standard. Tailgate may be lowered and secured parallel to the ground, dropped down to 180 degrees, or removed completely.

Available in prime or black paint.



LANDSCAPER RACKS

Landscaper racks are compatible with 94 series PVMX and PCH series platforms and BH, BHR and BHRB4094 bulkheads. They feature center punch panels and a sure lock system locking the racks into the stake pockets. Quiet latches secure the stake racks together. The rear doors can pivot 270 degrees and lock into the full open position.

Landscaper racks are available for 9', 12' and 14' models.

Available in black paint only.

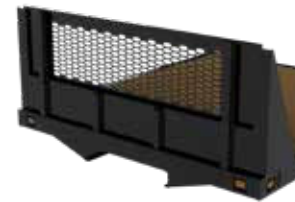
BULKHEAD OPTIONS

Knapheide bulkheads are built for functionality and style. The use of long lasting durable materials and strong structural design protect you from the heaviest load, keeping you and your truck safe.



BH SERIES

- Rectangular bulkhead
- Drop-in style with punched window
- Compatible with all platforms, recommended for stake racks
- Bulkhead material: 11-gauge high strength steel (100 Series 56" models are 10-gauge)
- Vertical post material: 13-gauge high strength steel



BHG SERIES

- Rectangular bulkhead
- Drop-in style with punched window and attached gussets
- Compatible with all platforms, recommended for stake racks
- Bulkhead material: 11-gauge high strength steel (100 Series 56" models are 10-gauge)
- Vertical post material: 13-gauge high strength steel



BHR AND BHRB SERIES

- Rectangular bulkhead, heavy duty reinforced
- Weld-on (BHR) and bolt-on (BHRB) style with punched window
- Compatible with all platforms
- Bulkhead material: 11-gauge high strength steel (100 Series 56" models are 10-gauge)
- Vertical post material: 11-gauge high strength steel outer post, 3" structural channel inner post



BHTS SERIES

- Westerner bulkhead
- Drop-in style with punched window
- Styled for Westerner platform
- Compatible with all platforms. Compatible only with 6", 12" and 28" racks
- Bulkhead material: 14-gauge high strength steel
- Vertical post material: 13-gauge high strength steel



BHT SERIES

- Tapered bulkhead
- Drop-in style with punched window
- Compatible with all platforms. Not compatible with racks or grain sides.
- Bulkhead material: 11-gauge high strength steel
- Vertical post material: 13-gauge high strength steel



BHRT SERIES

- Rectangular bulkhead
- Heavy duty, reinforced weld-on style with punched window
- Compatible with all platforms. Not compatible with racks or grain sides.
- Bulkhead material: 11-gauge high strength steel
- Vertical post material: 13-gauge high strength steel outer post, 3" structural channel inner post

**All bulkheads are primed with electrodeposition gray epoxy paint and finish coated with oven-cured black enamel paint. See Platform price pages for model specific information and applications.*

MODEL OPTIONS

VALUE-MASTER-X™

LENGTH	CA	SRW MODELS (80 Series)			DRW MODELS (94 & 100 Series)		
		WOOD	SMOOTH STEEL	TREAD PLATE	WOOD	SMOOTH STEEL	TREAD PLATE
7'3"	36"-40"	PVMX-738	PVMXS-738	PVMXT-738	-	-	-
7'6"	42"	PVMX-768	PVMXS-768	PVMXT-768	-	-	-
8'6"	56"	PVMX-868	PVMXS-868	PVMXT-868	PVMX-86	PVMXS-86	PVMXT-86
8'9"	56"	PVMX-898	PVMXS-898	PVMXT-898	PVMX-89	PVMXS-89	PVMXT-89
9'5"	60"	PVMX-958	PVMXS-958	PVMXT-958	PVMX-95	PVMXS-95	PVMXT-95
10'5"	72"-84"	-	-	-	PVMX-105	PVMXS-105	PVMXT-105
11'5"	84"	-	-	-	PVMX-115	PVMXS-115	PVMXT-115
12'5"	84"-102"	-	-	-	PVMX-125	PVMXS-125	PVMXT-125
13'5"	108"	-	-	-	PVMX-135	PVMXS-135	PVMXT-135
14'5"	102"-124"	-	-	-	PVMX(W)-145	PVMX(W)S-145	PVMX(W)T-145
16'5"	108"-138"	-	-	-	PVMX(W)-165	PVMX(W)S-165	PVMX(W)T-165
18'5"	120"-152"	-	-	-	PVMX(W)-185	PVMX(W)S-185	PVMX(W)T-185
20'5"	136"-168"	-	-	-	PVMX(W)-205	PVMX(W)S-205	PVMX(W)T-205
22'5"	144"-192"	-	-	-	PVMX(W)-225	PVMX(W)S-225	PVMX(W)T-225
24'5"	158"-196"	-	-	-	PVMX(W)-245	PVMX(W)S-245	PVMX(W)T-245
26'5"	196"-270"	-	-	-	PVMX(W)-265	PVMX(W)S-265	PVMX(W)T-265

*Models with (W) are 100 Series platforms and denotes 102" nominal width

HEAVY-HAULER JUNIOR™

LENGTH	CA	DRW MODELS (94 & 100 Series)		
		WOOD	SMOOTH STEEL	TREAD PLATE
9'5"	60"	PHHJ-95	PHHJS-95	PHHJT-95
11'5"	72"-84"	PHHJ-115	PHHJS-115	PHHJT-115
12'5"	84"-102"	PHHJ-125	PHHJS-125	PHHJT-125
14'5"	102"-124"	PHHJ(W)-145	PHHJS(W)-145	PHHJT(W)-145
16'5"	108"-138"	PHHJ(W)-165	PHHJS(W)-165	PHHJT(W)-165
18'5"	120"-152"	PHHJ(W)-185	PHHJS(W)-185	PHHJT(W)-185
20'5"	136"-168"	PHHJ(W)-205	PHHJS(W)-205	PHHJT(W)-205
22'5"	144"-192"	PHHJ(W)-225	PHHJS(W)-225	PHHJT(W)-225
24'5"	158"-196"	PHHJ(W)-245	PHHJS(W)-245	PHHJT(W)-245
26'5"	196"-270"	PHHJ(W)-265	PHHJS(W)-265	PHHJT(W)-265

*Models with (W) are 100 Series platforms and denotes 102" nominal width

CARGO-HAULER™

LENGTH	CA	DRW MODELS (94 Series)		
		WOOD	SMOOTH STEEL	TREAD PLATE
12'5"	84"-102"	PCH-125	PCHS-125	PCHT-125
13'5"	102"-108"	PCH-135	PCHS-135	PCHT-135
14'5"	102"-124"	PCH-145	PCHS-145	PCHT-145
16'5"	108"-138"	PCH-165	PCHS-165	PCHT-165
18'5"	120"-152"	PCH-185	PCHS-185	PCHT-185
20'5"	136"-168"	PCH-205	PCHS-205	PCHT-205
22'5"	144"-192"	PCH-225	PCHS-225	PCHT-225
24'5"	158"-196"	PCH-245	PCHS-245	PCHT-245
26'5"	196"-270"	PCH-265	PCHS-265	PCHT-265

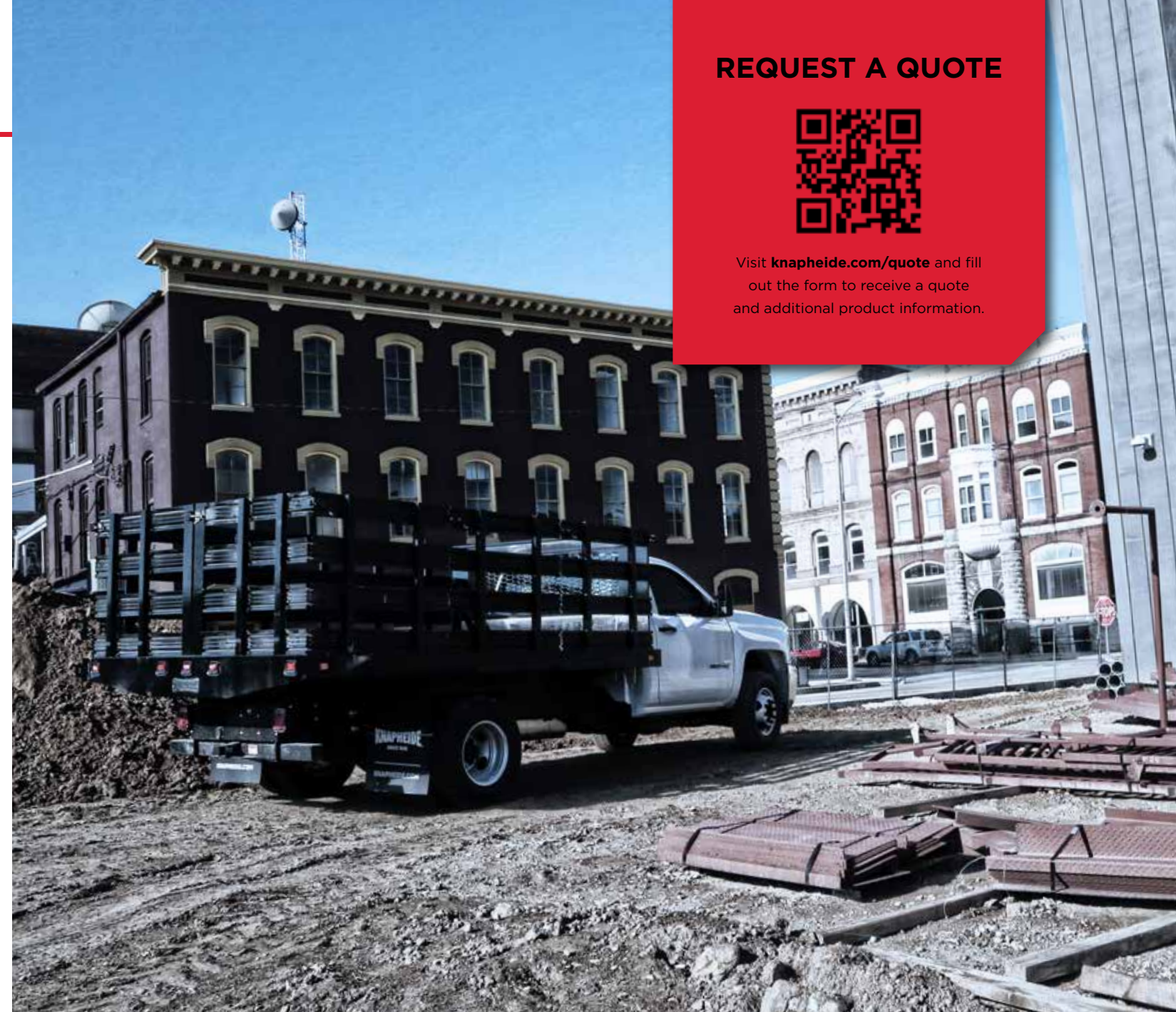
HEAVY-HAULER™

LENGTH	CA	DRW MODELS (94 Series)		
		WOOD	SMOOTH STEEL	TREAD PLATE
12'4"	84"-102"	PHH-124B	PHHS-124B	PHHT-124B
14'4"	102"-124"	PHH-144B	PHHS-144B	PHHT-144B
16'4"	108"-134"	PHH-164B	PHHS-164B	PHHT-164B
18'4"	131"-152"	PHH-184B	PHHS-184B	PHHT-184B
20'4"	146"-168"	PHH-204B	PHHS-204B	PHHT-204B
22'4"	160"-192"	PHH-224B	PHHS-224B	PHHT-224B
24'4"	174"-196"	PHH-244B	PHHS-244B	PHHT-244B
26'4"	196"-270"	PHH-264B	PHHS-264B	PHHT-264B

REQUEST A QUOTE



Visit knapheide.com/quote and fill out the form to receive a quote and additional product information.



COMMITMENT TO CORROSION RESISTANCE

Corrosion won't be a concern when you buy quality Knapheide products. To give you the best corrosion protection, we utilize a state-of-the-art, custom-designed, 12-step, SST cathodic electrodeposition finishing system, called "E-Coat."

It bonds prime paint to steel by an electroplating process to give you a superior coat of primer, resulting in better corrosion protection compared to spraying methods.

This system allows us to create products with the highest level of corrosion resistance available.



FOLLOW US
LIKE US
TAG US



THREE YEAR, LIMITED TIME WARRANTY



**NO RUST
THROUGH**



**FREE FROM
DEFECTS IN
WORKMANSHIP**



**FREE FROM
DEFECTS IN
MATERIALS**

TO LEARN MORE VISIT
www.knapheide.com/warranty



NEVER SETTLE

If you are going to be a leader, it takes more than building a high-quality product. It means never being totally satisfied with that product, no matter how high quality it may be. It requires constant vigilance and a willingness to take a chance on something new. And it means exceeding expectations every time. As the industry changes, one thing never will—our commitment to making customers like you as productive and efficient as possible. We know you don't settle, and we don't either. That's why we want you never to settle for anything less than Knapheide on the back of your truck.

KNAPHEIDE. NEVER SETTLE.



The Knapheide Manufacturing Company
1848 Westphalia Strasse | Quincy, IL 62305
217-222-7131
www.knapheide.com